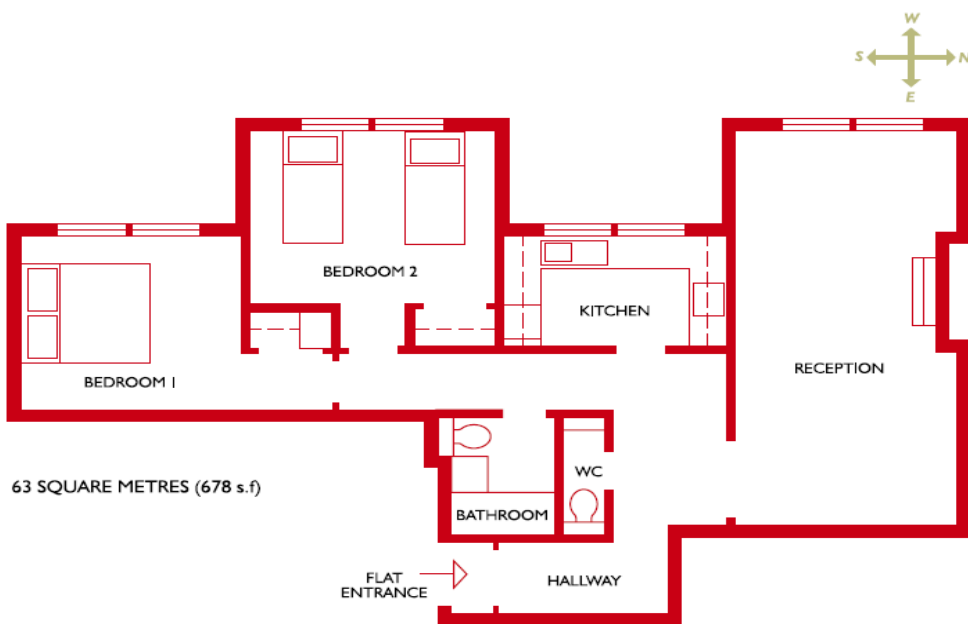


2 BEDROOM STANDARD

Maximum occupancy for this apartment is 4 persons, approx. 678sqft (63sqm), located on the 4th floor. This apartment consists of two bedrooms, one with a queen-sized bed, the second bedroom with twin beds, a private bathroom with bathtub (off the hallway, near the bedrooms), additional cloakroom, a combined living/dining room and a fully equipped kitchen with washer/dryer, oven, microwave, fridge/freezer and dishwasher. This apartment type is fully air-conditioned.



Apartments in each category may vary from above floorplan

Every apartment is individually design; therefore the pictures and the floor plan may vary from apartment to apartment.



Facilities

- Check-in time: from 15:00
- Check-out time: by 11:00
- Daily Maid Service
- 24 hours Concierge
- Business Services available
- Seated Lobby Area
- Elevator
- Laundry & Dry Cleaning facilities
- Direct dial telephones with voicemail
- Complimentary internet access
- Video entry phone
- Personal Safe
- Satellite TV, Freeview & Sky TV, DVD
- Iron & ironing board in room
- Washer/dryer
- Fridge/freezer
- Microwave
- Dishwasher
- Nespresso machine
- Air - conditioning
- Electric Fans
- Baby cots/highchairs
- Baby-sitting service on request
- Doctor on call
- Complimentary Health Club membership nearby
- Welcome basket
- Theatre/car/restaurant booking agents
- Chauffeur Service on request
- Food shopping available
- Guest PC in Lobby with fax, printer, scanner and copier

